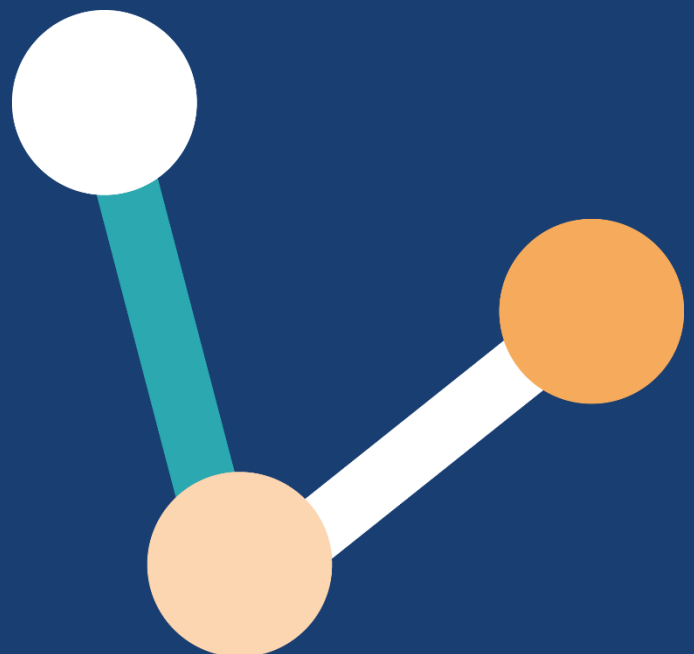


NIHR@Leeds BRC & CRF

**Patient and Public Involvement, Engagement and
Participation (PPIEP) Strategy**

2022-2027



Introduction

The National Institute for Health and Care Research ([NIHR](#)) is funded by the Department of Health and Social Care ([DHSC](#)) to deliver health and care research in the UK, which improves the health and wellbeing of one and all.

One of the ways the NIHR does this is by providing the facilities needed to develop and deliver research. In Leeds, the NIHR funds the Biomedical Research Centre ([BRC](#)) and the Clinical Research Facility ([CRF](#)). The BRC and CRF are part of NIHR@Leeds, along with our [NIHR Surgical Medtech](#) and [In Vitro Diagnostics](#) Co-operatives. The BRC focuses on developing early stage research into potential new treatments, diagnostics, and medical technologies, whereas the CRF focuses on clinical trials of experimental, early-stage research.

Both the BRC and CRF are managed by Leeds Teaching Hospitals NHS Trust ([LTHT](#)) with the University of Leeds ([UoL](#)). LTHT provides the clinical resources and the UoL provides the academic resources to develop and deliver world-leading research activity based upon areas of expertise.

At the heart of the UK, Leeds is a diverse, multicultural community. The research that we develop and deliver needs to be relevant to and reach our communities, particularly those who are often described as ‘underserved’ because research has been designed in a way that is not inclusive of their needs and priorities. The NIHR@Leeds BRC & CRF are committed to delivering world-leading research that improves health and well-being for everyone. This commitment is further detailed in our NIHR@Leeds Equity, Diversity, and Inclusion Strategy 2023-27. Both Strategies have been developed in parallel to ensure we promote an inclusive culture that underpins all our research activities.

Patients and the public have been at the heart of all activities across the NIHR@Leeds BRC & CRF since 2008, transforming how we plan, prioritise, conduct, and communicate our research – this is known as ‘Patient and Public Involvement and Engagement’ (PPIE).

With the expansion of both the BRC and the CRF, we are keen to grow our PPIE community. One of the ways we will do this is by working with local community and voluntary sector organisations to understand and establish opportunities which are inclusive and relevant to a variety of communities and individuals.

Building upon this we can improve the representation of those who participate in our research activities, which is why we have chosen to include ‘Participation’ in our PPIE remit. This synergy will directly contribute to the wider BRC and CRF vision of providing ‘Research for one and all’.

Vision

Our vision for Patient and Public Involvement, Engagement and Participation (PPIEP) is to drive meaningful research led by the patient and public voice; to deliver research that is relevant, inclusive, and impactful to our communities, particularly those who are most at need.

Values

Our PPIEP culture will be -

- Committed to equity, diversity, and inclusive practices
- Respectful
- Led with integrity
- Confidential where necessary for all stakeholders
- Transparent and honest
- Accountable

Definitions

All definitions have been taken from the [NIHR glossary](#) to align with NIHR terminology.

Patient and Public Involvement (PPI)

An active partnership between patients and the public and researchers in the research process, rather than the use of people as 'subjects' of research. Patient and public involvement in research is often defined as doing research 'with' or 'by' people who use services rather than 'to', 'about' or 'for' them.

Patient and Public Engagement (PPE)

Ways in which research can be shared with the public in a two-way process. Engagement encourages researchers to listen and interact with the general public, for example, via science festivals, open days, media coverage and social media.

Participation

The act of taking part in a research study, for example people being recruited to take part in a clinical trial or another kind of activity, such as joining in a focus group or completing a questionnaire.

Public Partnerships

A term to describe ways in which patients, service users, carer givers and members of the public work with researchers, and health and care professionals, in the creation and use of health and care research.

Public Contributor

Public Contributor is an umbrella term used to describe members of the public who take part in patient and public involvement activities. We use the definition of 'public' to include patients, potential patients, care givers and people who use health and social care services as well as people from organisations that represent people who use our services.

Our PPIEP Strategy at a glance

Our vision for Patient and Public Involvement, Engagement and Participation is to drive meaningful research led by the patient and public voice; to deliver research that is relevant, inclusive, and impactful to our communities, particularly those who are most at need	
1	Embed Public Partnerships and Coproduction in everything we do
2	Ensure that our PPIEP is representative of underserved communities
3	Build upon and increase awareness and engagement in research activity through tailored approaches
4	Recognise the contribution and value of Public Contributors
5	Work as 'one NIHR' in the Leeds City region
6	Plan, monitor and evaluate impact

Aims, Impact and Objectives

Aim 1: To embed Public Partnerships and Co-production in everything we do

Impact: Through establishing and embracing a culture of Public Partnerships and Co-production at all levels of the NIHR@Leeds BRC & CRF, we will be able to develop and deliver PPIEP activities that are reflective of the main areas of concern for those with lived experience of conditions and lead to treatments and interventions that make a difference to people's lives.

Involvement Standards: Training and Governance

Objectives

- a. Provide a package of support and learning for researchers and other research staff
- b. Establish and ensure PPIEP representation within the governance of the NIHR@Leeds BRC & CRF
- c. Ensure accountability against the NIHR Leeds@ BRC & CRF PPIEP strategy through reporting at the respective BRC and CRF Oversight Groups
- d. Involve Public Partners in the development of relevant Strategies and Oversight Groups
- e. Provide a comprehensive package of support and guidance for all researchers through establishing a PPIEP Facility
- f. Provide branding for PPIEP excellence in line with the UK Standards for Public Involvement which can be achieved by researchers who excel in their activities
- g. Develop a strategic commitment to Public Partnerships and Co-production through establishing champion/lead roles within senior and early career researchers
- h. Ensure the culture of Public Partnerships and Co-production is embedded at a senior level to support the management of realistic expectations and transparency

Aim 2: To ensure that our PPIEP is representative of underserved communities

Impact: Through building sustainable and reciprocal relationships with the voluntary and community sector we will co-produce PPIEP activities which are inclusive, meaningful, and impactful for those who are typically underserved in research.

Involvement Standards: Inclusive Opportunities, Communications and Governance.

Objectives

- a. Invest resources to build sustainable and mutually beneficial relationships with voluntary and community sector organisations
- b. Identify and develop Community Research Champions with a reach into communities
- c. Explore what research means to those who are typically underserved by research
- d. Appropriately act upon identified research priorities from our communities
- e. Build upon this exploration to develop and deliver a range of community outreach and engagement activities
- f. Identify and provide needs-based support to voluntary sector organisations to meaningfully raise awareness of research within their communities

Aim 3: To build upon and increase awareness and engagement in research activity through tailored approaches

Impact: Through establishing a consistent and clear approach to our engagement activities, PPIEP opportunities are well-publicised, relevant, and tailored to reach a wide variety of audiences

Involvement Standards – Communications, Working Together, Inclusive Opportunities

- a. Expand our programme of PPIEP activities to be delivered both in person and digitally based upon need
- b. Develop a clear PPIEP Communications and Outreach Strategy
- c. Identify and use Client Relationship Management software to manage a targeted approach to communication about PPIEP activities
- d. Improve website engagement through sharing information that is relevant and accessible to a patient and public audience
- e. Increase our use of social media to engage with wider audiences
- f. Build upon our existing stakeholder relationships to improve understanding and acceptability of research opportunities
- g. Identify and build upon wider locality-based relationships beyond NIHR partners

Aim 4: To recognise the contribution and value of Public Contributors

Impact: Establish a consistent, clear, and relevant approach to how we value our Public Contributors, so they are well supported, able to contribute, and a respected sustained part of the NIHR@Leeds community.

Involvement Standards: Training, Working Together

- a. Work with Public Contributors to establish meaningful ways of recognising their involvement
- b. Develop clear and consistent Recognition and Expenses Policies
- c. Provide mentorship and a short induction to research to new Public Contributors
- d. Provide training and support to Public Contributors
- e. Ensure updates, outcomes and impact are shared with Public Contributors

Aim 5: To work as 'one NIHR' in the Leeds City region

Impact: By co-producing our PPIEP Strategy, action plan, and activities as NIHR@Leeds, PPIEP across the partnership is consistent, efficient, accessible, and clear to our existing and prospective Public Partners and researchers.

Involvement Standards: Working together, Governance

Objectives and Activity

- a. Develop and commit the capacity to deliver best practice PPIEP activity across NIHR@Leeds
- b. Cost in PPIEP activity to NIHR@Leeds grant applications including additional capacity as well as standard PPIEP expenditure
- c. Pool PPIEP resources across the NIHR@Leeds partnership to increase capacity, reduce duplication, and streamline processes
- d. Involve Public Partners and Contributors in individual and overall Governance of PPIEP at NIHR@Leeds

Aim 6: To plan, monitor and evaluate impact

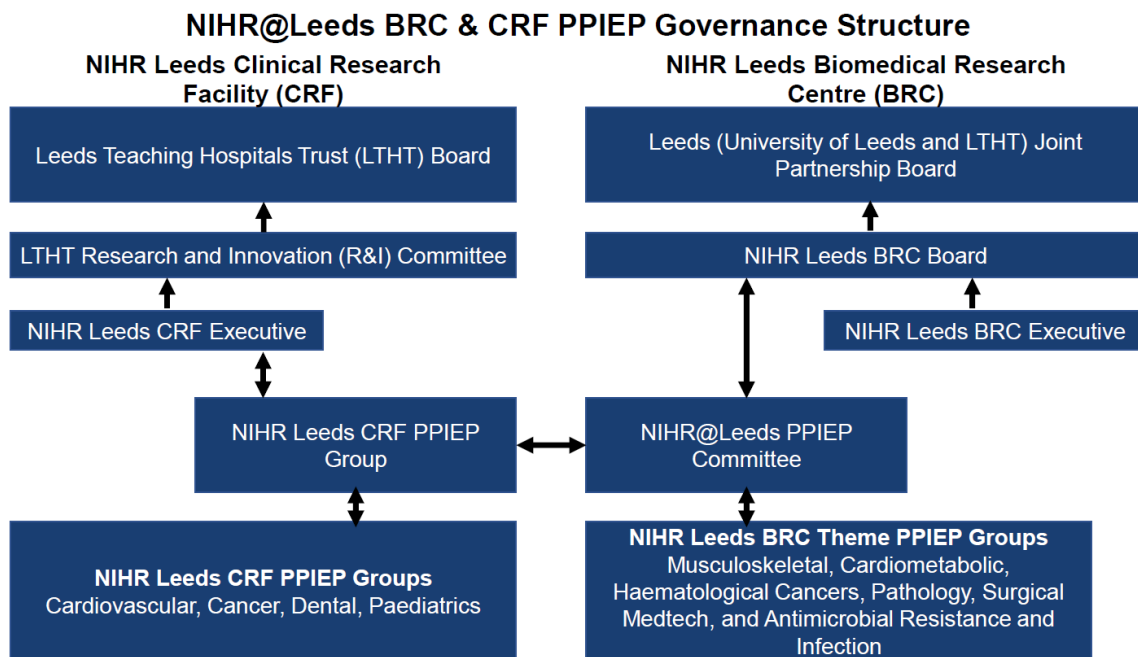
Impact: PPIEP activities are planned, monitored, and evaluated in a consistent way, ensuring that impact is shared with all stakeholders within appropriate timeframes in an accessible and relevant format embedded within a wider culture of improvement and learning.

Involvement Standard: Impact and Evaluation

Objectives:

- a. Review current monitoring and impact processes to identify improvements
- b. Work with stakeholders to Identify what impact we would like to measure and how we will do this
- c. Develop a framework and metrics for evaluation and monitoring of PPIEP activities across the NIHR@Leeds partnership in line with NIHR@Leeds BRC and CRF PPIEP Strategy 2022-27
- d. Establish a series of feedback methods tailored to individual audience needs

Governance and Reporting, Monitoring, and Review



PPIEP staff will report to their respective PPIEP Groups and the NIHR@Leeds PPIEP Committee and NIHR Leeds CRF PPIEP Group, there will be a two-way flow of information between these two Groups. The NIHR Leeds BRC and CRF PPIEP Leads will be responsible for collating this activity.

The NIHR Leeds BRC PPIEP Lead will report to the NIHR Leeds BRC Executive for operational PPIEP matters and support the two NIHR Leeds BRC PPIEP representatives to report to the NIHR Leeds BRC Board against the PPIEP Strategy for 2022- 2027. The NIHR Leeds BRC PPIEP Lead will also report to the Leeds Joint Partnership Board.

The NIHR Leeds CRF PPIEP Lead will report to the NIHR Leeds CRF Executive and support the two NIHR Leeds CRF PPIEP representatives to report to the LTHT Board and LTHT R&I Committee against the NIHR Leeds BRC & CRF PPIEP Strategy for 2022-27.

Both the NIHR Leeds BRC and CRF will report outcomes of the strategy annually to the NIHR. The above governance structure and explanation outlines how we will report outcomes internally. Additionally, we will report to our Public Partners and Contributors in a relevant and accessible way.

Monitoring

With our stakeholders we will co-produce an Action Plan of delivery against our Strategy. This will be used to break down the overall objectives and aims into activities which will be developed following SMART principles - Specific, Measurable, Achievable, Realistic, and Timely.

The Action Plan will be finalised by the end of BRC year one (December 2023).

Review

Both the Strategy and Action Plan are living documents and will be reviewed by the 30th April of each year to reflect lessons learnt and changes in priorities for both ourselves and our partners.

Acknowledgements

This Strategy has been developed in partnership between the NIHR@Leeds BRC & CRF to streamline and build upon our activities. Meetings and workshops took place with Public Contributors, Partners and internal stakeholders to inform the content. This will continue as we develop our action plan.

We would like to thank everyone who worked on co-producing this strategy. In particular, the BRC PPIE Core Group, the CRF PPIE Groups, the NIHR@Leeds In-Vitro Diagnostic PPIE group, and the NIHR@Leeds Surgical Medtech PPIE group. We would also like to thank our Senior Management Team and Theme Leads for their continued support and advocacy.

NIHR | Leeds Biomedical
Research Centre

NIHR | Leeds Clinical
Research Facility



UNIVERSITY OF LEEDS



**The Leeds
Teaching Hospitals**
NHS Trust

**NIHR@Leeds BRC & CRF
Patient and Public Involvement, Engagement and Participation
(PPIEP) Strategy
2022-2027**

May 2023