

# NIHR Leeds Biomedical Research Centre 2022-27 Patient and Public Involvement, Engagement and Participation (PPIEP)



**Amy Rebane – PPIEP Manager**  
**[a.k.rebane@leeds.ac.uk](mailto:a.k.rebane@leeds.ac.uk)**



# Looking back on 2017-2022

- Established a strong methodology for PPIE activity – MSK Core Group, MSK Network, co-produced PPIE Strategy and NIHR@Leeds partnership.
- Training and best practice– guidance, EULAR, VA, NHS governors, UoL.
- Engagement – ICTD, Be Curious, lab tours and Ask the Researcher.
- Pandemic – successful move to online activity.
- C-19 vaccine development engagement –
  - Vaccine-hesitant groups
  - Via community sector
  - Recognition
  - Awareness raising at both sides
  - Shaped our current approach



# Community Conversations



# Additional requirements from the NIHR

- There is an explicit need for research to follow patient need. Our PPIE strategy includes how we target such underserved populations in terms of PPIE and how we report on how successful we are.
- “P” for participation – how do we recruit more patients into studies? How do we know they reflect under represented groups?

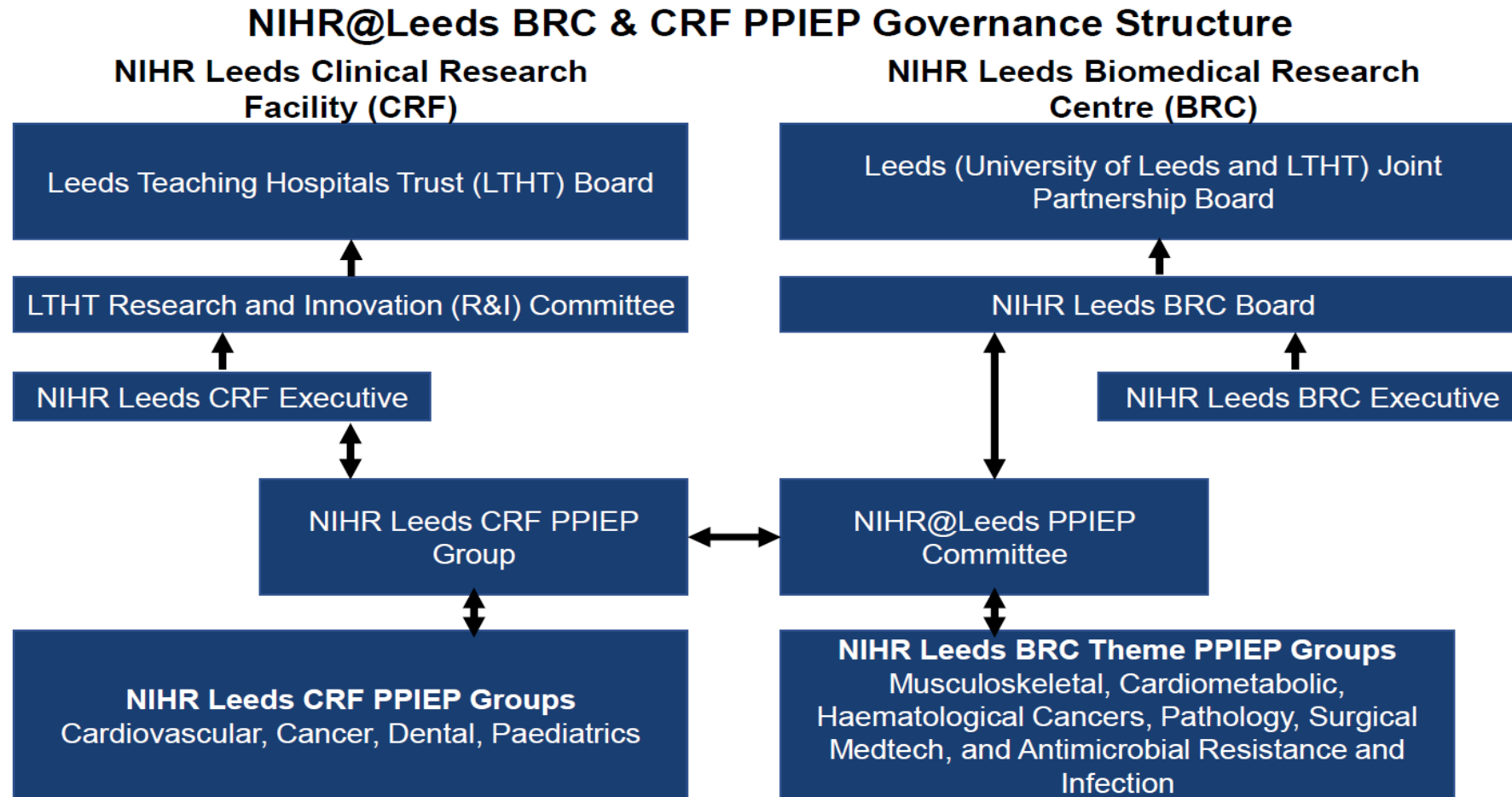


# PPIEP Strategy

Our vision for Patient and Public Involvement, Engagement and Participation is to drive meaningful research led by the patient and public voice; to deliver research that is relevant, inclusive, and impactful to our communities, particularly those who are most at need

1	Embed Public Partnerships and Coproduction in everything we do
2	Ensure that our PPIEP is representative of underserved communities
3	Build upon and increase awareness and engagement in research activity through tailored approaches
4	Recognise the contribution and value of Public Contributors
5	Work as 'one NIHR' in the Leeds City region
6	Plan, monitor and evaluate impact

# Governance



# Meet the team



Amy Rebane  
PPIEP Manager



Libby Atkinson  
Senior PPIEP  
Officer



Sharanjit  
Boughan  
Community  
PPIEP Co-  
ordinator



Julie Corrigan  
Cardiometabolic  
PPIEP Lead



TJ - Oghenetejiri  
Gbembre  
Administrative  
Officer

**NIHR Leeds BRC**  
**Patient and Public Involvement, Engagement and Participation (PPIEP) Team**

NIHR Leeds Biomedical Research  
Centre 2022-27  
Equality, Diversity and Inclusion  
(EDI)



**Amy Rebane – Interim EDI Lead**  
**[a.k.rebane@leeds.ac.uk](mailto:a.k.rebane@leeds.ac.uk)**





# Golden Threads

- The principles of PPIEP and EDI run through everything we do, so it is easy for them to be seen as the same thing.
- PPIEP – involving Public Partners in our research activities at all stages ensuring that it is driven by patient need in a way that is meaningful, relevant and accessible to them.
- **EDI** – ensuring that the space we operate in is **inclusive** for all, ensuring **equality** in access and valuing the **diversity** that people have to offer.



# NIHR@Leeds EDI Strategy

## Our Themes

These are the five themes through which we will achieve our EDI goals over the next five years.

Ensuring EDI Oversight  
and Governance

Developing our EDI  
maturity

Developing a better staff  
EDI culture

Improving staff  
recruitment and  
retention

Enhancing participation  
and encouraging  
inclusivity in research

Thank you!

Questions

